

CTIF AIRPORT COMMISSION MEETING



Frankfurt 10th – 11th September 2014

Company Profile

China International Marine Containers (Group) Ltd. (CIMC) is a world leading supplier of logistic and energy equipment, headquartered in Shenzhen of China. CIMC is dedicated to supplying high-quality and reliable equipment and services, including containers, vehicles, energy and chemical equipment, offshore engineering, logistics services, airport facilities, etc.



Containers



Vehicles



Energy,
Chemical
and Food
Equipment



Offshore



Airport
Facilities



Logistics
Service



Finance



Real
Estate



Railway
Equipment



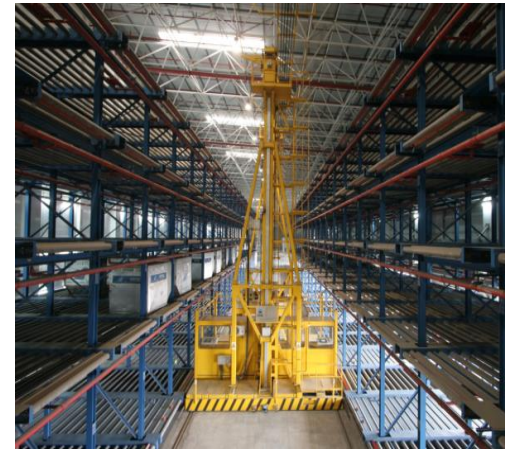
Airport Facilities

Boarding bridges made by CIMC has been in service in airports of more than 80 countries all over the world





Airport Facilities



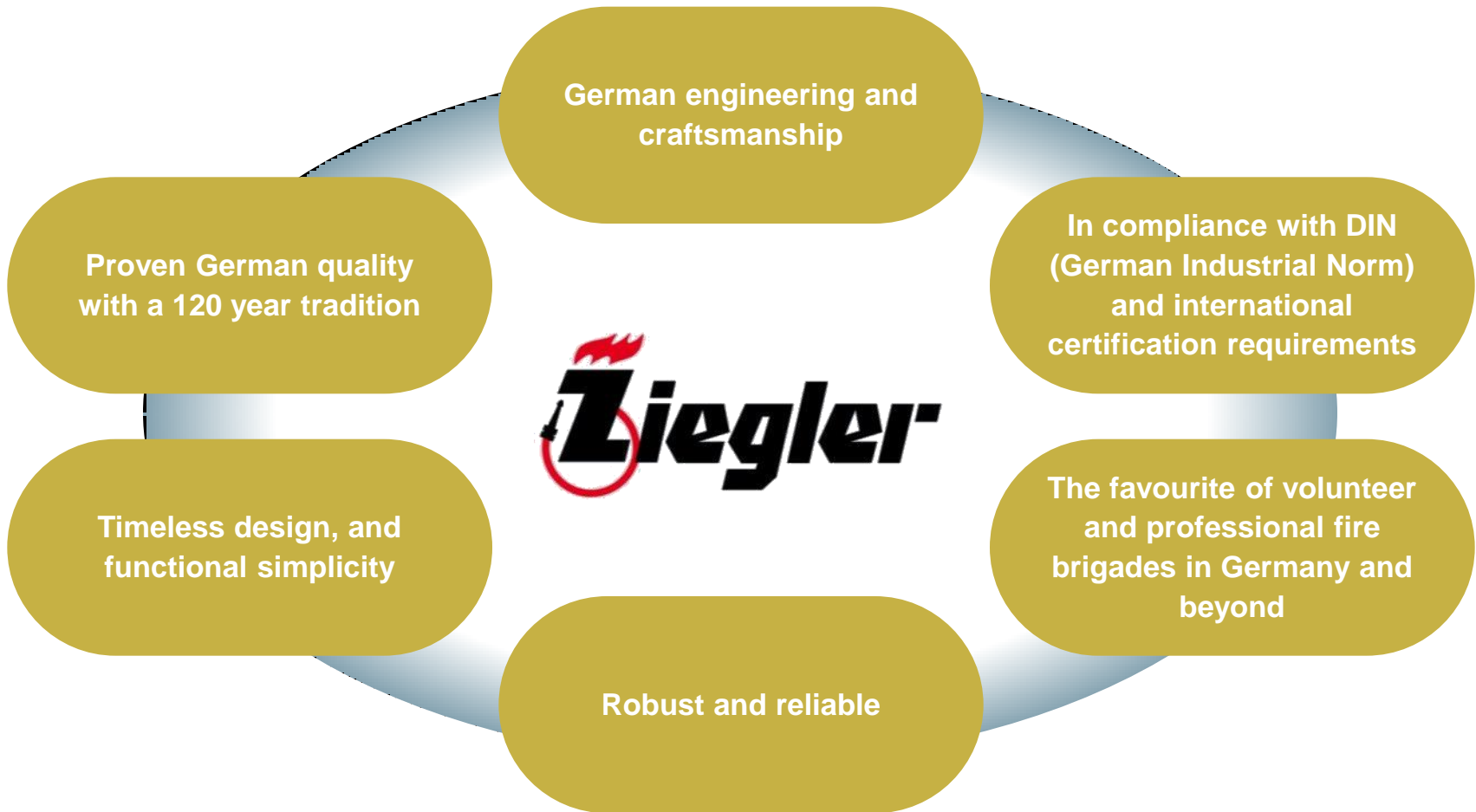


Vehicles

Global Forerunner of
special vehicle market

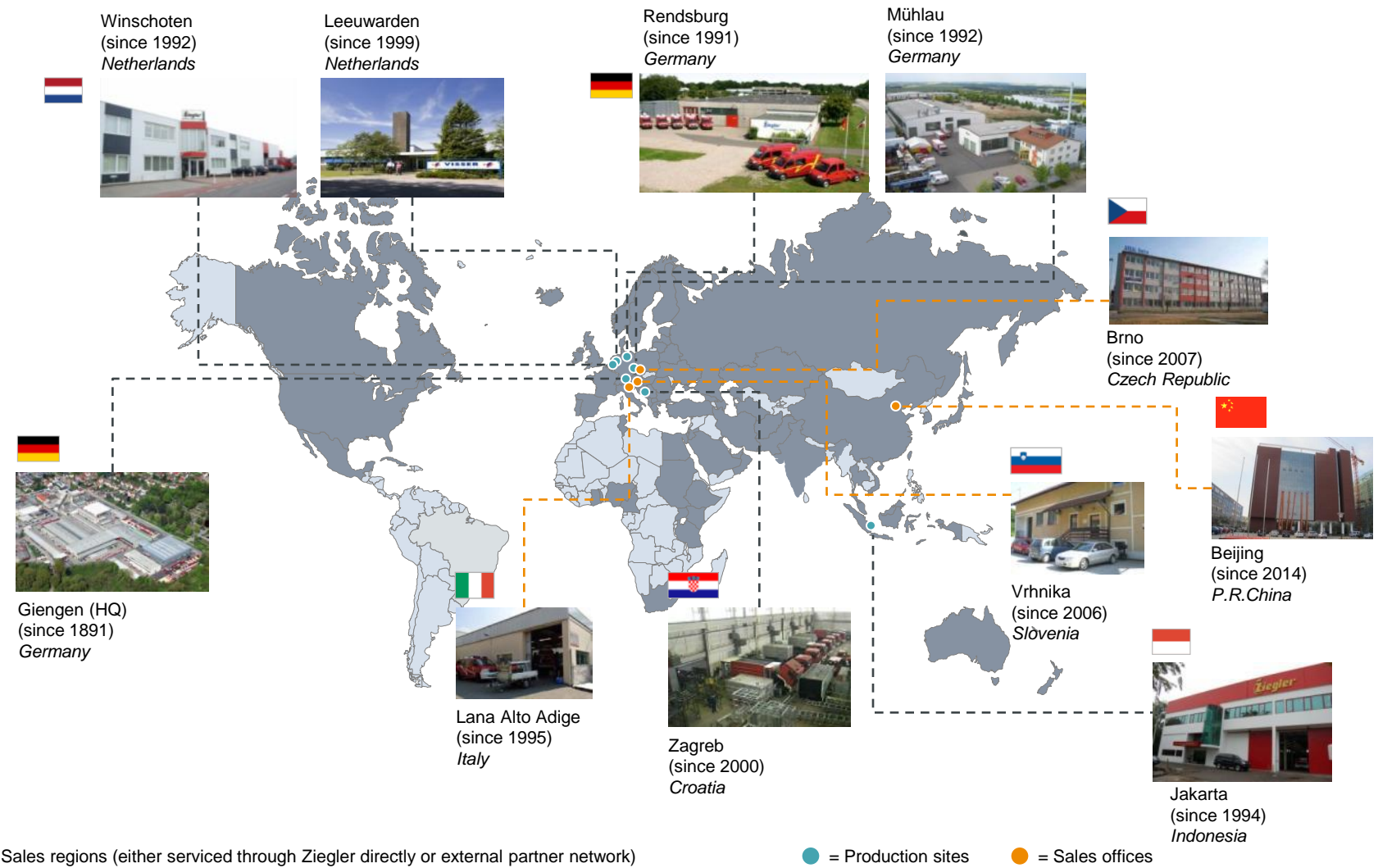


The Ziegler brand and associated attributes



Ziegler – providing safety for more than 120 years in Germany and around world

Overview of Ziegler's production sites and sales offices



Cities and municipal authorities



- Professional fire departments in larger cities
- Voluntary fire brigades in smaller towns

Infrastructure operators



- Airport operators which have to comply with ICAO directives
- Customers in Europe include airports in Frankfurt, Munich, Brussels, Zurich, Turkey, Vietnam, Malaysia

Industrial corporations



- Petrochemical companies
- Base & specialty chemical companies
- Power plant operators
- International customers include Sinopec China, China Oil, Mobil Oil Indonesia, Royal Thai Navy, Dung Quat - Vietnam,

Special purpose vehicle manufacturer



- Manufacturer of specialized vehicles
- Distribution partners of Ziegler

Medical care



- Hospitals, retirement homes, mental hospitals, nursing homes
- Emergency care units

Government ministries & NGOs



- State authorities in Germany and abroad
- Armed forces
- Police forces
- Non Governmental Organizations

AIRCRAFT RESCUE & FIREFIGHTING VEHICLES



Solutions for runway & terminal

AIRCRAFT RESCUE & FIREFIGHTING VEHICLES



LF 10/HLF 10
LF 20/HLF 20
GW
RW Kran

AIRCRAFT RESCUE & FIREFIGHTING VEHICLES



ADVANCER
on commercial chassis

Z-series
on non-commercial chassis

AIRCRAFT RESCUE & FIREFIGHTING VEHICLES



2006-2010
Turkey Ministry of Defense



2013
German Army



2014
Italian Ministry of Interior



2012
Munich Airport



2012
Frankfurt Airport



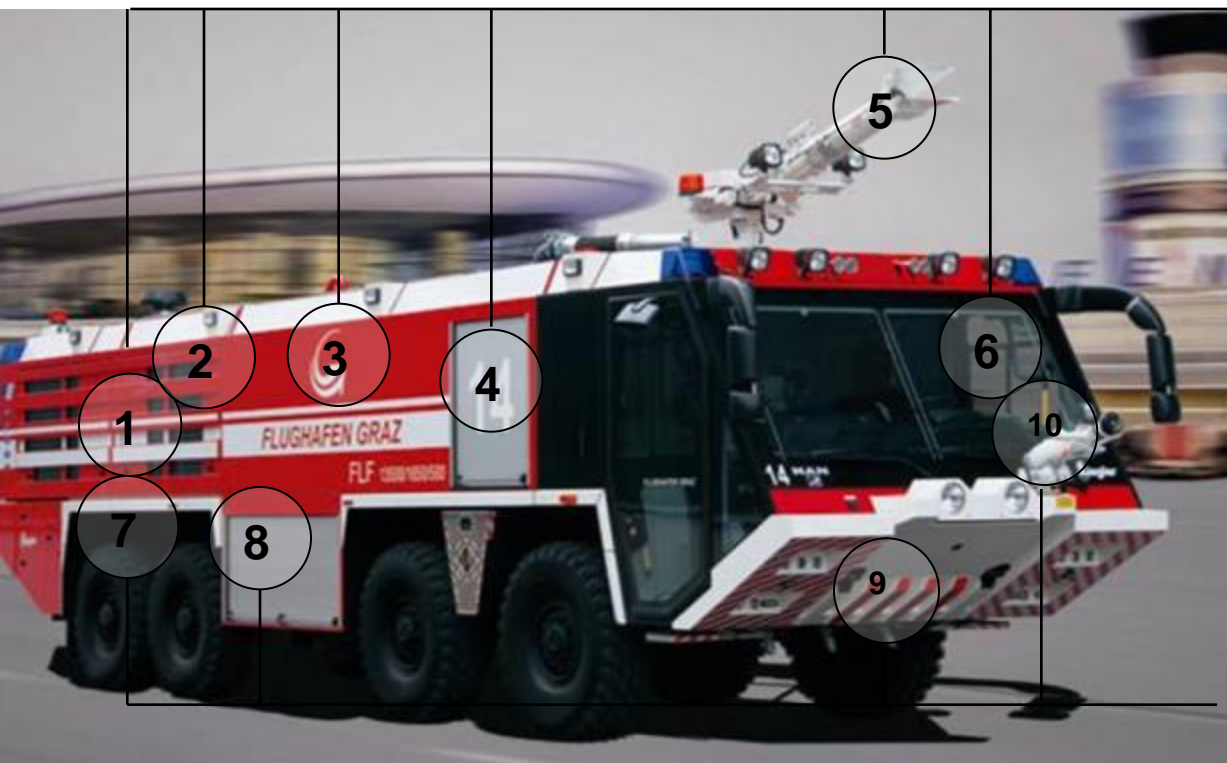
2013
Dubrovnik Airport

AIRCRAFT RESCUE & FIREFIGHTING VEHICLES

Chassis for Ziegler ARFF trucks

- *engine power up to 1.400 HP*
- *fully automatic transmission*
- *4x4, 6,6, 8x8 all-wheel drive*
- *Disc brake system according to ECE R13*
- *Rigid box profile frame with progressive coil spring suspension*
- *permissible total weight up to 52 t*
- *acceleration 0-80 km/h within 21 sec*
- *top speed up to 140 km/h*
- *available in EURO 3 / 5 / 6*
- *100% ICAO & NFPA compliant*

AIRCRAFT RESCUE & FIREFIGHTING VEHICLES



- engine locker
- pump with an output up to 10.000 l/min
- water Foam tank with a volume up to 19.000 L
- powder unit up to 1000 kg
- roof turret up to 6.000 l/min
- aluminium / GRP large – capacity safety cab
- fuel tank
- quick-intervention units
- body / ground protection system
- bumper turret up to 3.800 l

AIRCRAFT RESCUE & FIREFIGHTING VEHICLES



AIRCRAFT RESCUE & FIREFIGHTING VEHICLES



Controls

- *Operation via colour displays in driver's cab and at the pump control panels*
- *CAN-BUS technology for superstructure and chassis*
- *Thanks to the logical, clear and ergonomic arrangement of the controls as well as the high degree of automating simple and exact operation of the extinguishing unit*
- *The diagnostic program with indication on display as well as the telediagnostic system provide quick access to the system at troubles*

AIRCRAFT RESCUE & FIREFIGHTING VEHICLES



- *Reliable and proven ZIEGLER Pump technology for safe fire fighting operations*
- *Pump output up to 10.000 l/min*
- *Pump-and-roll operation via Power Divider or separate pump drive engine*
- *Automatic pressure governor TOURMAT D*
- *Double-piston suction system TROKOMAT-PLUS*
- *ZIEGLER Proportioning unit EAD Pump pre-mixing, automatic adjustment of flow rate, proportioning rates 1 up to 10 % infinitely adjustable*

Pump & foam mixing system

AIRCRAFT RESCUE & FIREFIGHTING VEHICLES



- *Electrically remote-controlled*
- *Manual emergency operation via hand wheels*
- *multiple-gallonage nozzle or combination pipe and deflector*
- *Hydrochem-Technology possible*
- *Electronic Joy-Stick-Proportional-Control for fine and quick adjustment of the turrets*

Roof turret & bumper turret

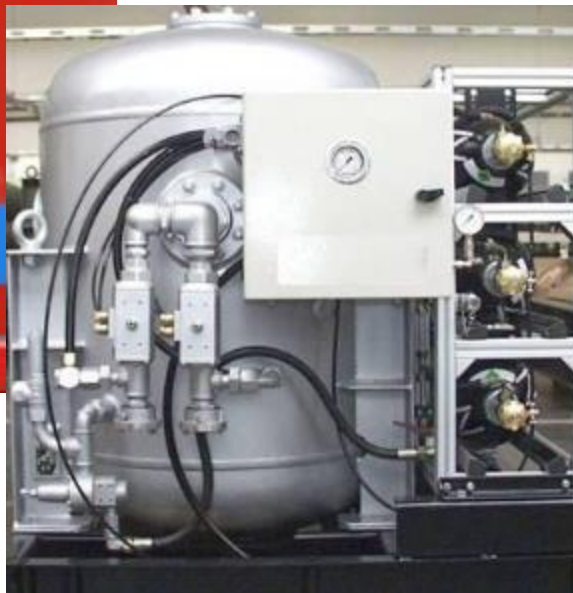
AIRCRAFT RESCUE & FIREFIGHTING VEHICLES



- *Output up to 6.000 l/min*
- *Horizontal swivel range +/- 30°*
- *Height up to 20 m*
- *Overhang up to 12 m*

High reach extendable turret

AIRCRAFT RESCUE & FIREFIGHTING VEHICLES



- *CO₂ Extinguishing up to 270 kg*
- *Powder units up to 1.000 kg*
- *Quick-intervention units on reel or with foldable hose, powder output 2,5 kg/sec up to 5 kg/sec*
- *Combined Hydrochem bumper and / or roof turret, additional powder turret available*

Auxiliary extinguishing agents

AIRCRAFT RESCUE & FIREFIGHTING VEHICLES



- *External start unit with up to 20 arbitrary functions*
- *Ambiance lighting*
- *Auxiliary searchlights*
- *Rear view camera, colour camera, IR camera etc.*
- *Light mast*
- *Paintwork or glueing of foil as desired by customer*
- *And a lot more*

Additional equipment

AIRCRAFT RESCUE & FIREFIGHTING VEHICLES



Ergonomic and functional design meeting the fire fighting demands

Thanks to CAN-BUS full automation level

Extreme distortion- and corrosion-resistant aluminium superstructure

High functionality due to use of serial parts

Compliance with all safety and fire brigade standards

Ziegler ARFF technology

State-of-the-art manufacturing technology and functional design for safe and efficient use



AIRCRAFT RESCUE & FIREFIGHTING VEHICLES

Despite increasing tactical and legal demands on airport tenders we are perfectly prepared for the challenges of tomorrow



**THANK YOU FOR
YOUR ATTENTION!**

